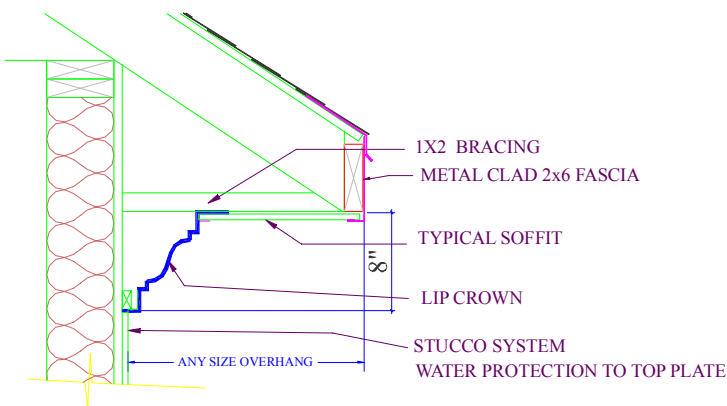
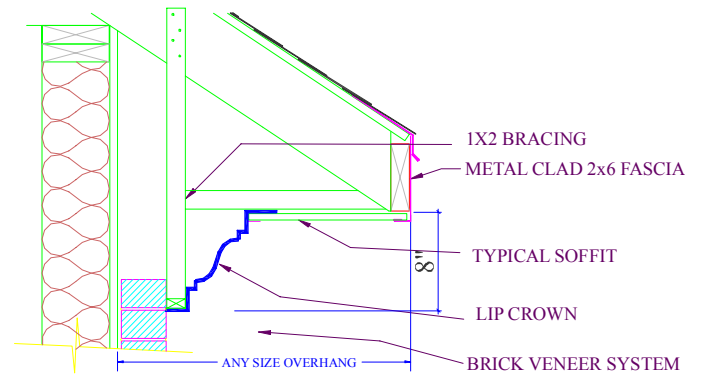


STONE



STUCCO



BRICK

**Traditional Crown System** is for all sizes of overhangs. Cornice molding is installed on the wall and Soffit material makes up the overhang length distance from the cornice detail to the fascia board.



-Since 1995-  
[www Exteriors by Elite.com](http://www.Exteriors by Elite.com)

## *Traditional Crown System*

**Utah** P.O. Box 900877 Sandy, UT 84090  
 (801) 733-4000 Fax (801) 733-4001

**Colorado** P.O. Box 33733 Denver, Co. 80233  
 (303) 957-4000 Fax (303) 287-9600

Toll Free (800) 601-1666

